

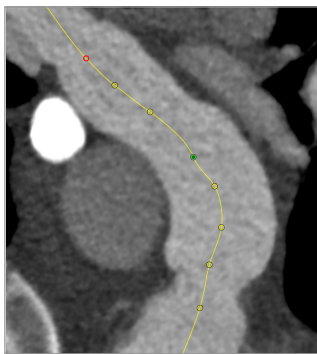
3mensio Pulmonary valve

The tool for pre-op planning of pulmonary valve replacement and stenting

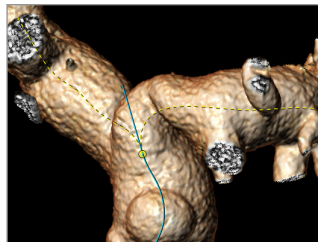
Quick, easy, and reliable measurements and planning of transcatheter Pulmonary valve implantations. 3mensio provides a dedicated module for the analysis of the Pulmonary Trunk in both ED and ES and the left and right Pulmonary Artery. Including virtual valve, virtual stent, and simulated Angio.



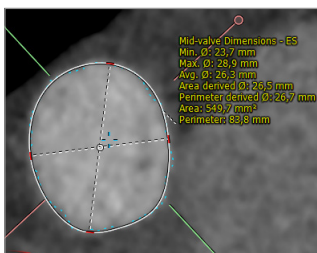
Volume rendering of Pulmonary trunk



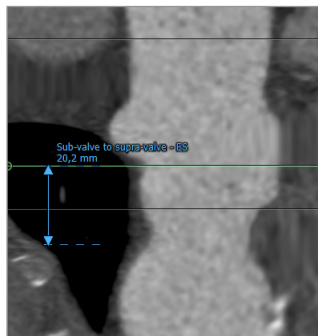
Automatic centerline



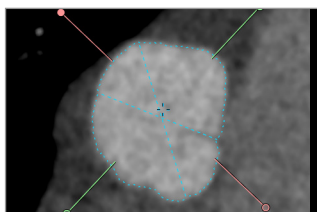
Three centerlines



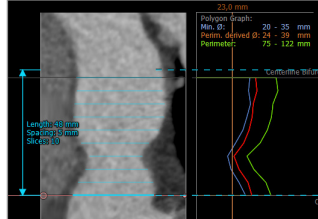
Diameter measurement



Pulmonary Trunk measurement



Automatic measurement



Polygon graph tool

Pulmonary measurements

Automatic segmentation

The intuitive workflow can automatically segment three centerlines through the Pulmonary Trunk and the left and right Pulmonary Arteries. But also offers full manual adjustment options.

Measurements

A variety of measurements is available:

- Area
- (perimeter derived) diameter
- (centerline) length measurements

Three centerlines allow measurement of:

- Pulmonary valve height
- Pre/post bifercation diameters
- RVOT dimensions

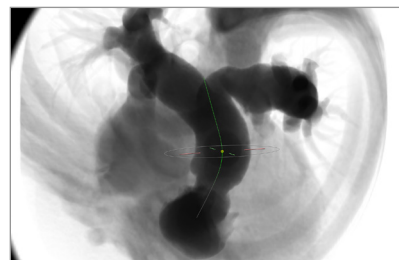
Polygon graph tool

The polygon graph tool will give a fast and intuitive overview of the Pulmonary Trunk by means of automated diameter measurements.

Pulmonary Trunk assessment

Simulated Angio

The simulated Angio can be used to find the optimal projections for implantation, which can help save time during the procedure.



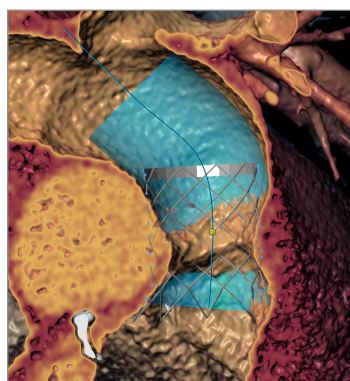
Simulated Angio view

3mensio Pulmonary valve

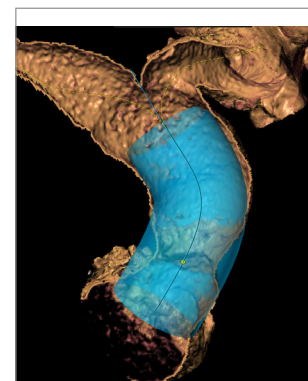
Virtual valve and stent

A virtual valve can be placed into the anatomy to allow better assessment of position and angle. Use the implemented custom valve or import an STL-file.

The virtual stent will automatically be aligned with the Pulmonary trunk using the centerline to allow assessment of the needed size and position of the stent.



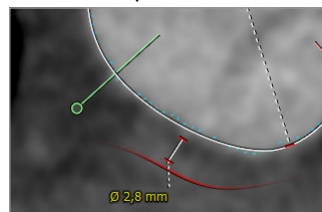
Virtual valve in-stent



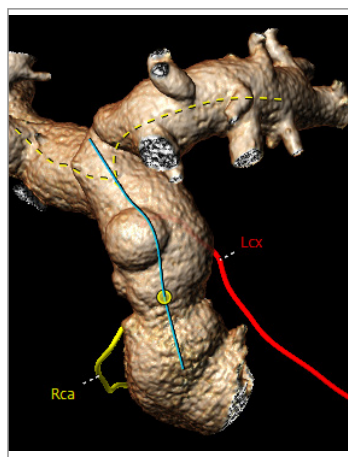
Virtual stent positioning



Curved sculpt



Coronary distance



Coronary overview

Anatomic assessment

Dedicated views are available to assess the anatomy. A view inside the vessel is possible using the curved sculpt tool.

Coronary tracing

The automated Coronary centerline tracing can be used to assess the relationship between the coronaries and the Pulmonary Trunk.

Reporting

A complete report including a variety of tabulated measurements can be created. Customize your report by adding screenshots and comments.

Review Interactive reports on your iPad

Open the report in the 3mensio Report app for interactive visualization of the anatomy, measurements, Angio angles, and screenshots.



Quality Assurance:

Pie Medical Imaging develops, produces and sells products in accordance with internationally accepted standards. 3mensio Workstation is FDA 510(k) cleared and CE marked.  0123